

**The Neighbourhood Planning (General) Regulations 2012 2012/637
Part 2**

Application for designation

Burwash Parish Council

14 April 2016

The Neighbourhood Planning (General) Regulations 2012 2012/637 Part 2

Application for designation

14 April 2016

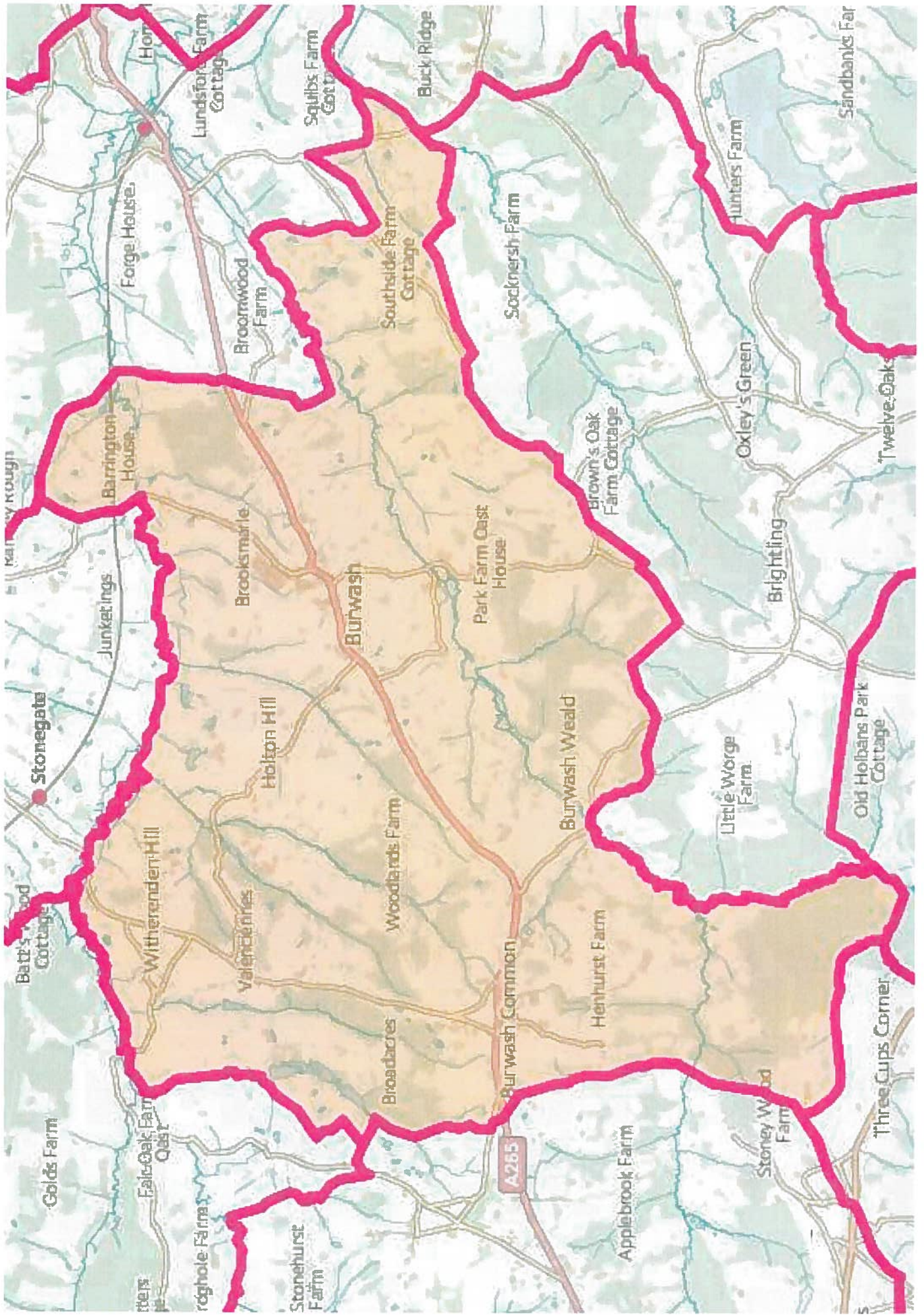
Applicant: Burwash Parish Council

Local Planning Authority: Rother District Council

- 1 In this application for designation the references to 'Regulations' are a reference to the regulations in the Neighbourhood Planning (General) Regulations 2012 2012/637 Part 2.
- 2 Burwash Parish Council by formal resolution on 9 February 2016 resolved to make this application.
- 3 **Consultation** Burwash Parish Council conducted an extensive consultation exercise concerning the proposal to create a Burwash Neighbourhood Plan. There were 179 written responses. 175 were in favour of the creation of the plan, 1 was undecided, 1 had no opinion and 2 were against.
- 4 Burwash Parish Council applies to Rother District Council to designate Burwash Parish as the area for the proposed Burwash Neighbourhood Plan.
- 5 **The map** (Regulation 5(1)(a)) The map accompanies this application for designation, as Enclosure A.
- 6 **Statement of why the area is appropriate for the proposed Neighbourhood Plan.** (Regulation 5(1)(b)) The reasons are:
 - a) The area selected, Burwash Parish, is the area envisaged as the normal appropriate area by Parliament when the legislation for Neighbourhood Plans was passed.
 - b) The local community and the local societies are predominantly based on Burwash Parish area.
 - c) Burwash Parish Council is a relevant body for the purposes of this application.
 - d) Any other area would cause difficulties in governance and cost, and would cause problems for Rother District Council.
- 7 **Statement that the body applying for designation is a relevant body** for the purposes of Town and Country Planning Act 1990 s 61G. (Regulation 5(1)(c)) Burwash Parish Council is such a body as Town and Country Planning Act 1990 s 61G(2)(a) designates a parish council as a 'relevant body'.

Signed: Jane Cheshire for and on behalf of Burwash Parish Council.

14 April 2016



Gold's Farm
Stonehurst Farm
Batt's Wood Cottage
Witherenden Hill
Valence Hill
Woodlands Farm
Broadacres
Burwash Common
A265
Applebrook Farm
Stoney Wood Farm
Three Cups Corner

Forge House
Barrington House
Junketings
Holton Hill
Burwash
Park Farm East House
Burwash Weald
Henhurst Farm
Little Worge Farm
Old Holbans Park Cottage

Lundsford Farm Cottage
Squibs Farm Cottage
Buck Ridge
Socknersh Farm
Brown's Oak Farm Cottage
Oxley's Green
Brightling
Twelve Oaks

Forge House
Barrington House
Junketings
Holton Hill
Burwash
Park Farm East House
Burwash Weald
Henhurst Farm
Little Worge Farm
Old Holbans Park Cottage

Lundsford Farm Cottage
Squibs Farm Cottage
Buck Ridge
Socknersh Farm
Brown's Oak Farm Cottage
Oxley's Green
Brightling
Twelve Oaks

Forge House
Barrington House
Junketings
Holton Hill
Burwash
Park Farm East House
Burwash Weald
Henhurst Farm
Little Worge Farm
Old Holbans Park Cottage

Lundsford Farm Cottage
Squibs Farm Cottage
Buck Ridge
Socknersh Farm
Brown's Oak Farm Cottage
Oxley's Green
Brightling
Twelve Oaks

Forge House
Barrington House
Junketings
Holton Hill
Burwash
Park Farm East House
Burwash Weald
Henhurst Farm
Little Worge Farm
Old Holbans Park Cottage

Lundsford Farm Cottage
Squibs Farm Cottage
Buck Ridge
Socknersh Farm
Brown's Oak Farm Cottage
Oxley's Green
Brightling
Twelve Oaks

Forge House
Barrington House
Junketings
Holton Hill
Burwash
Park Farm East House
Burwash Weald
Henhurst Farm
Little Worge Farm
Old Holbans Park Cottage

Lundsford Farm Cottage
Squibs Farm Cottage
Buck Ridge
Socknersh Farm
Brown's Oak Farm Cottage
Oxley's Green
Brightling
Twelve Oaks

Forge House
Barrington House
Junketings
Holton Hill
Burwash
Park Farm East House
Burwash Weald
Henhurst Farm
Little Worge Farm
Old Holbans Park Cottage

Lundsford Farm Cottage
Squibs Farm Cottage
Buck Ridge
Socknersh Farm
Brown's Oak Farm Cottage
Oxley's Green
Brightling
Twelve Oaks

Forge House
Barrington House
Junketings
Holton Hill
Burwash
Park Farm East House
Burwash Weald
Henhurst Farm
Little Worge Farm
Old Holbans Park Cottage

Lundsford Farm Cottage
Squibs Farm Cottage
Buck Ridge
Socknersh Farm
Brown's Oak Farm Cottage
Oxley's Green
Brightling
Twelve Oaks

Forge House
Barrington House
Junketings
Holton Hill
Burwash
Park Farm East House
Burwash Weald
Henhurst Farm
Little Worge Farm
Old Holbans Park Cottage

Lundsford Farm Cottage
Squibs Farm Cottage
Buck Ridge
Socknersh Farm
Brown's Oak Farm Cottage
Oxley's Green
Brightling
Twelve Oaks

Forge House
Barrington House
Junketings
Holton Hill
Burwash
Park Farm East House
Burwash Weald
Henhurst Farm
Little Worge Farm
Old Holbans Park Cottage

Lundsford Farm Cottage
Squibs Farm Cottage
Buck Ridge
Socknersh Farm
Brown's Oak Farm Cottage
Oxley's Green
Brightling
Twelve Oaks

Forge House
Barrington House
Junketings
Holton Hill
Burwash
Park Farm East House
Burwash Weald
Henhurst Farm
Little Worge Farm
Old Holbans Park Cottage